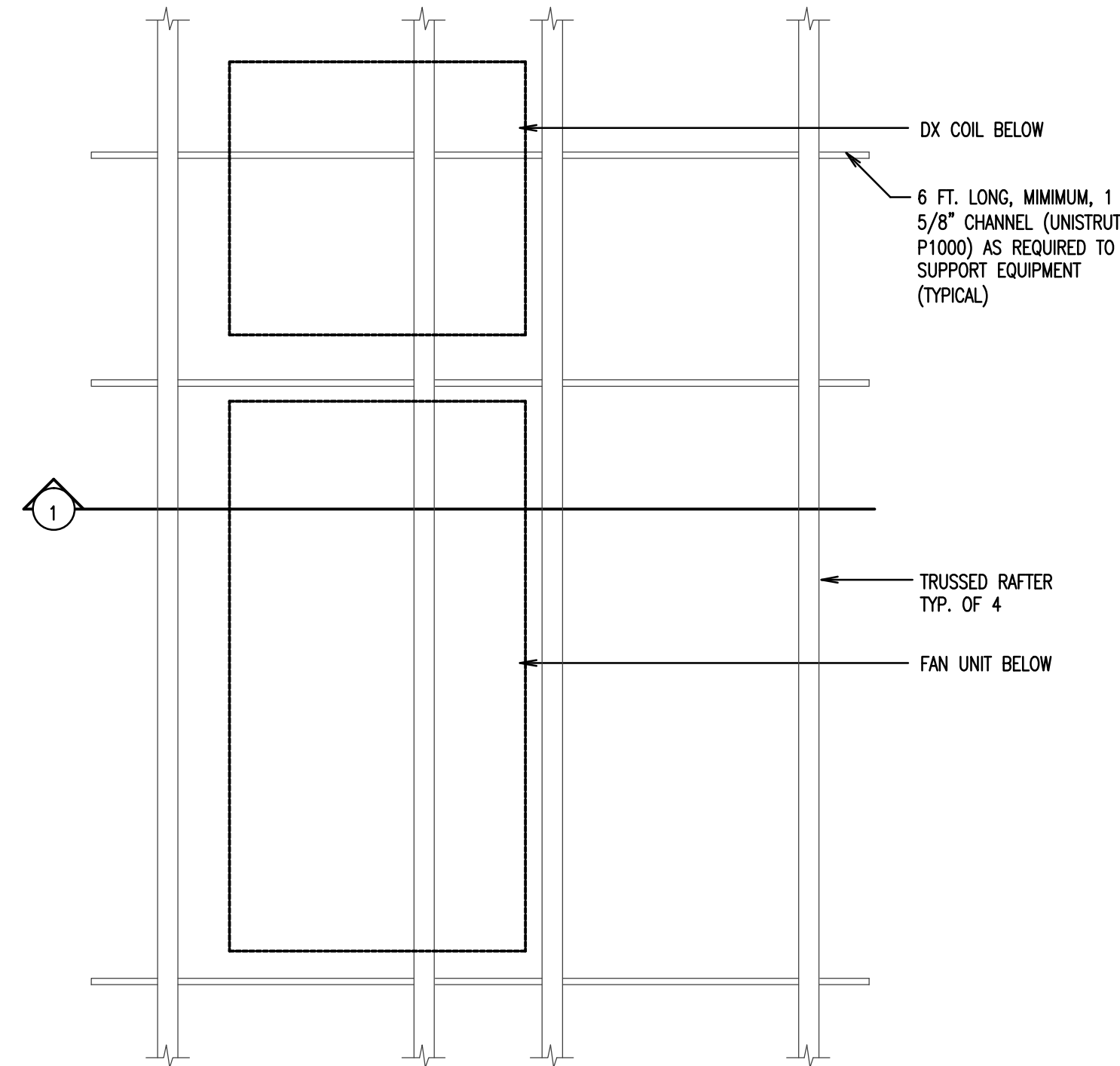
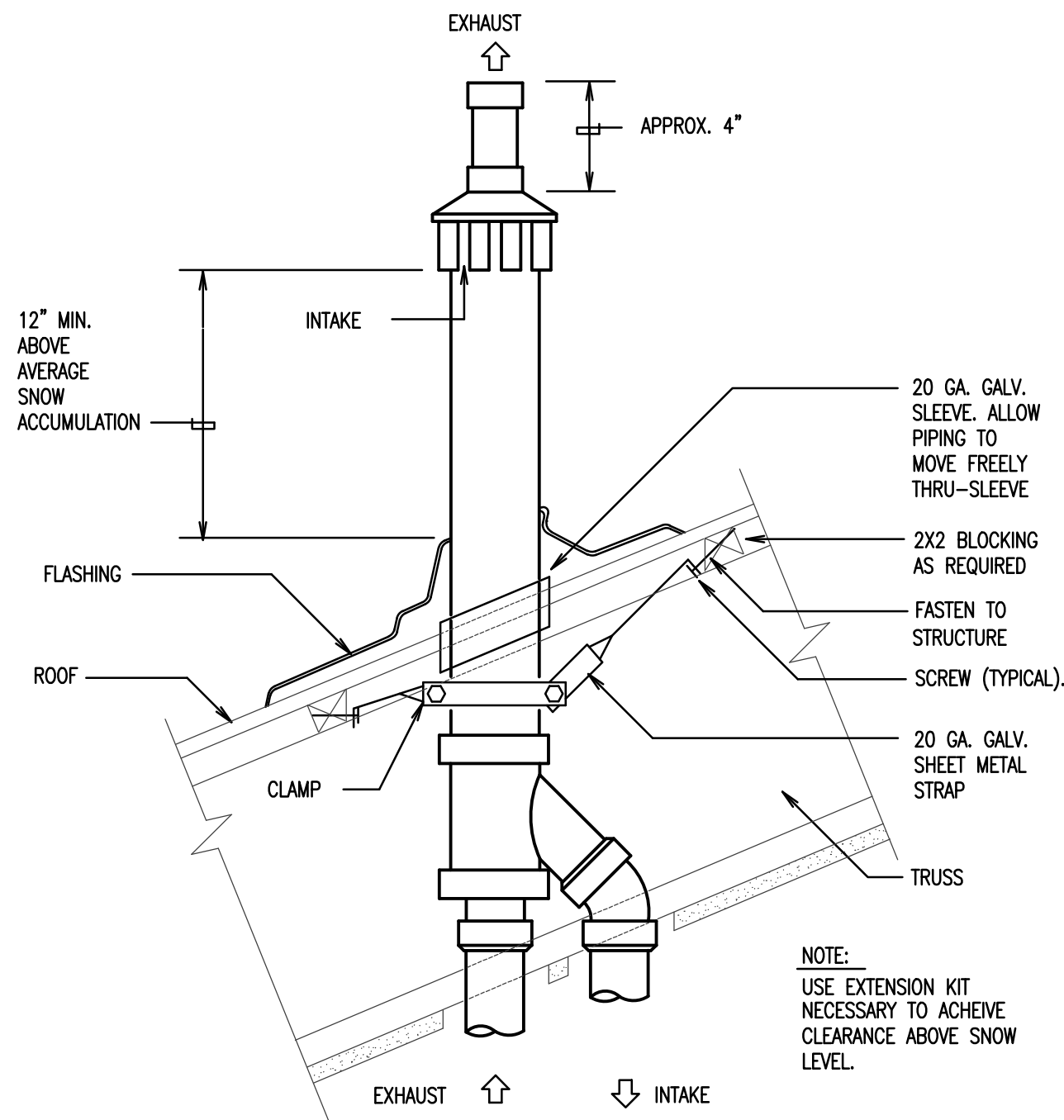


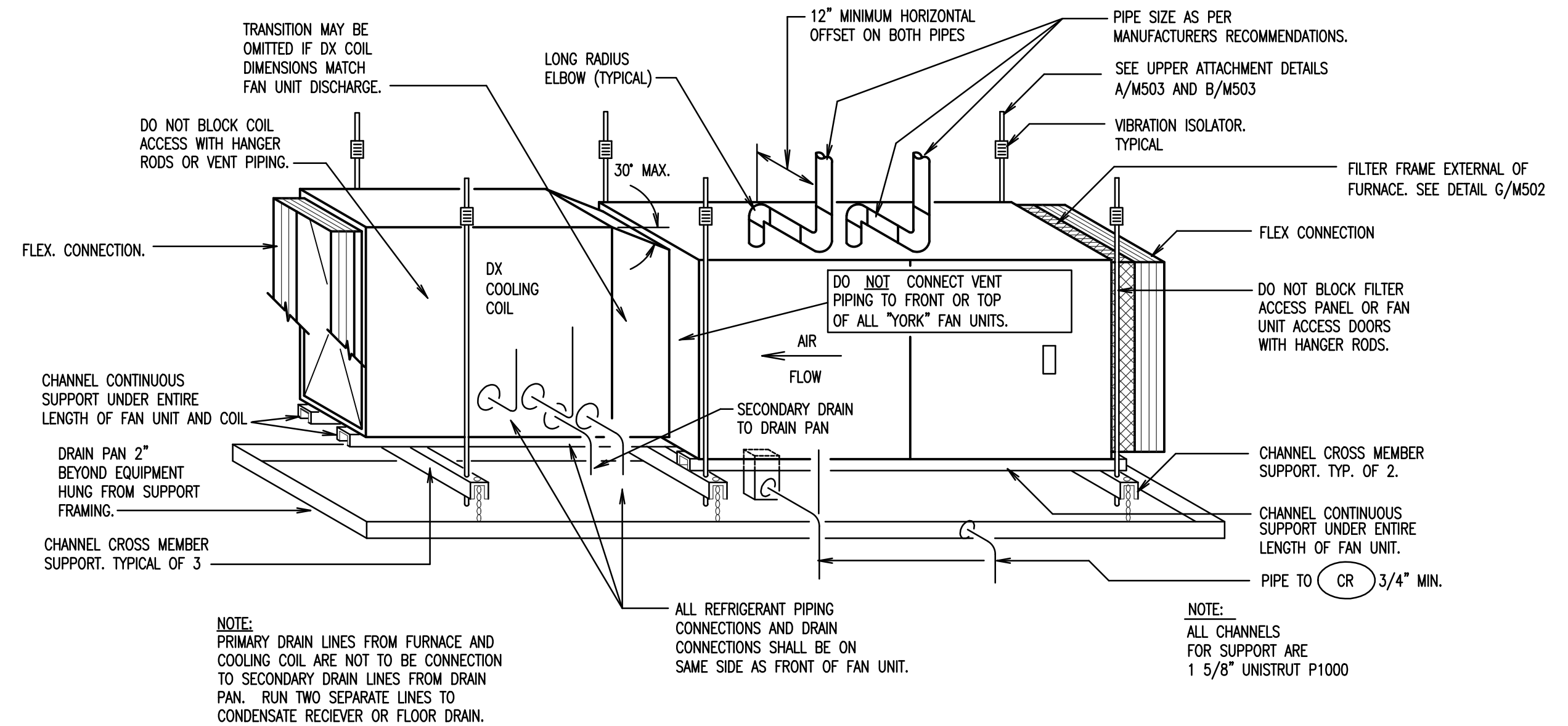
UPPER SUPPORT DETAIL
FOR TRUSSED RAFTERS LOCATIONS
A SCALE: NONE



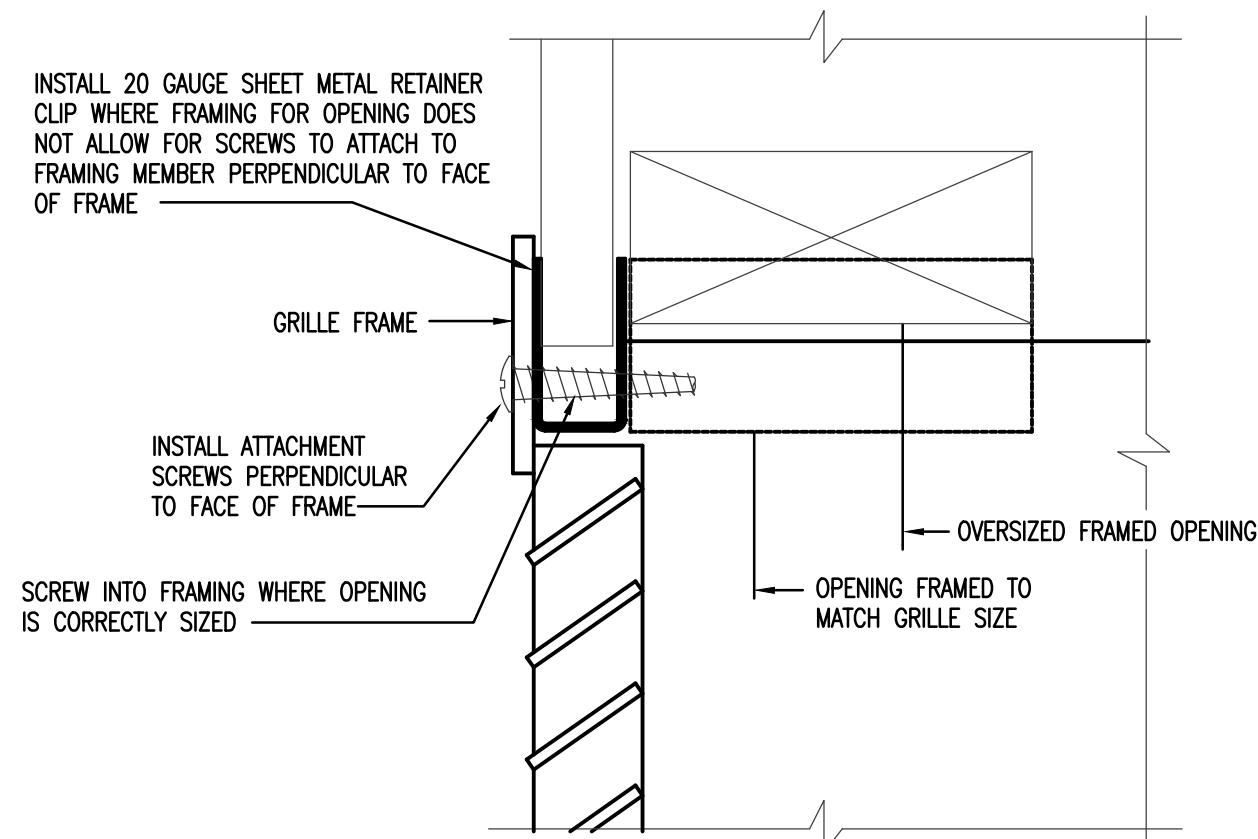
UPPER SUPPORT
DETAIL FOR TRUSSED RAFTERS
B SCALE: NONE



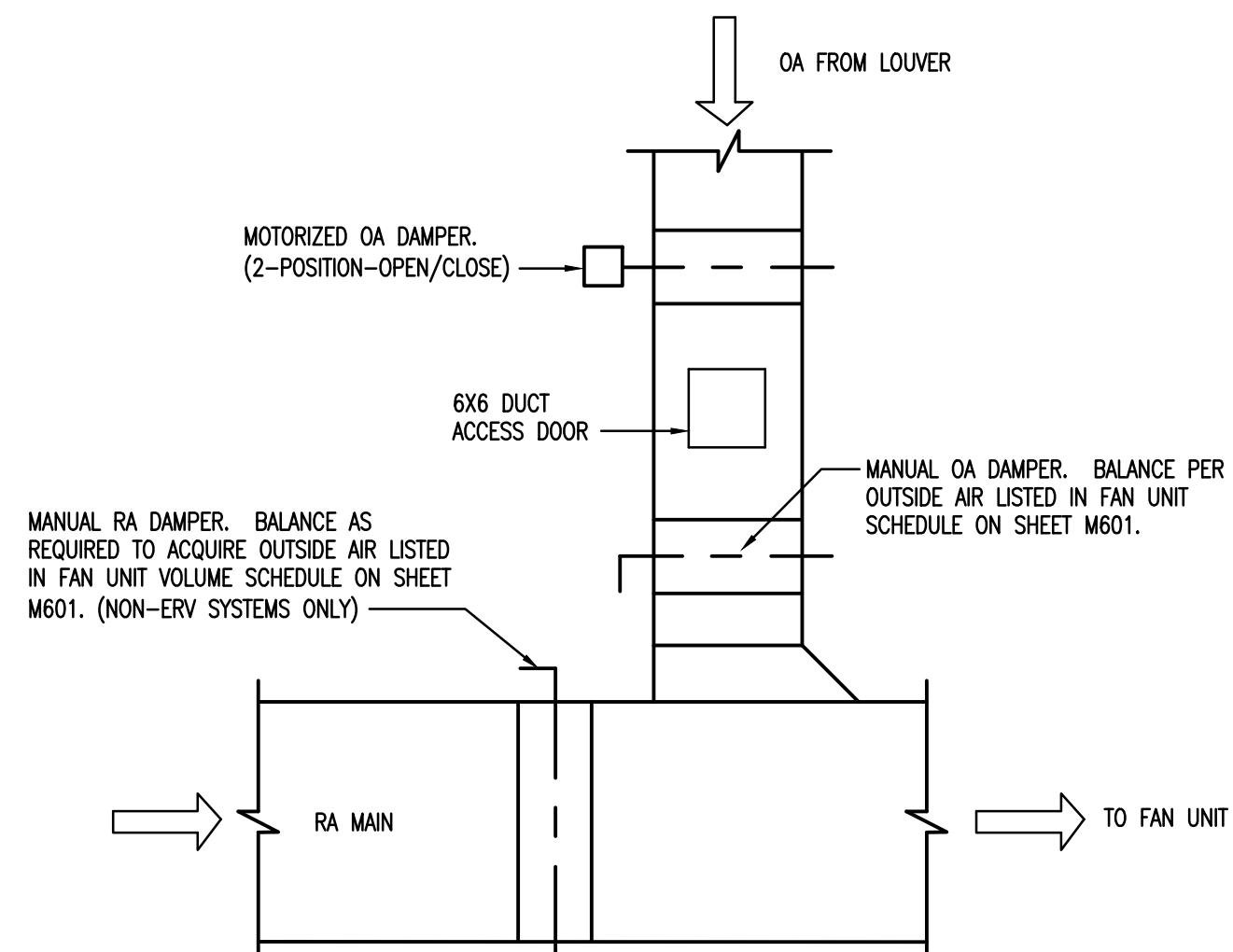
CONCENTRIC ROOF
TERMINATION DETAIL
C SCALE: NONE



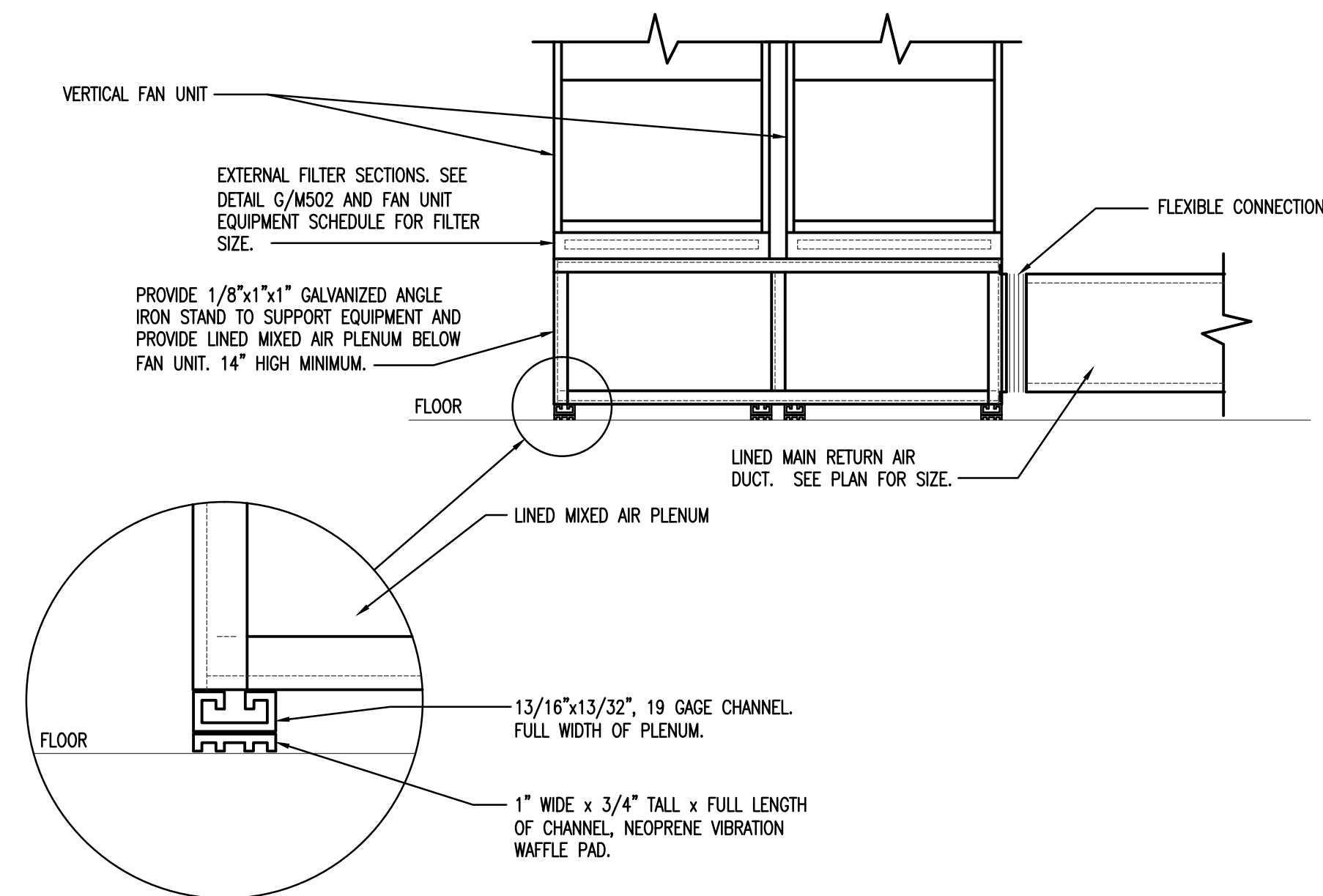
FAN UNIT SUPPORT DETAIL
D SCALE: NONE



GRILLE ATTACHMENT DETAIL
E SCALE: NONE

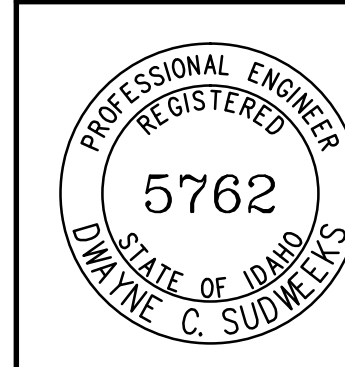


TYPICAL OUTSIDE AIR DUCT DETAIL
F SCALE: NONE



VERTICAL FURNACE SUPPORT DETAIL
G SCALE: NONE (F-1 AND F-2) (F-3 AND F-4 SIMILAR)

ORIGINAL DRAWING SIGNED BY: DWAYNE C. SUDNEEKS
DATE ORIGINAL SIGNED: May 23, 2017
ORIGINAL ON FILE AT ENGINEERED SYSTEMS ASSOCIATES
1355 EAST CENTER, POCATELLO, IDAHO 83201



Engineered Systems Associates
1355 EAST CENTER
POCATELLO, IDAHO 83201
PHONE: (208) 233-0501
FAX: (208) 233-0529
EMAIL: esa@engsystems.com
ESA JOB NUMBER: 17031

Architect / Engineer:
GENE C. ULMER
ARCHITECT
1506 S. SECRETARIAT WAY
Nampa, ID 83686
(208) 899-0874 • gculmerarch@aol.com

Date: May 23, 2017

Stamp:

Middleton Heritage 09T SC
Middleton Idaho Stake

1332 Cornell Street
Middleton, Idaho 83644

Project for:
THE CHURCH OF JESUS CHRIST OF LATTER-DAY SAINTS

Mark	Date	Rev.	Description

Project Number:
21701
Plan Series:
HET-SCS-09-07
Property Number:
50034331601

Sheet Title:
MECHANICAL DETAILS

Sheet:

M503

17031-M503.dwg 06/22/2017 - 3:05 PM